

20 Years
&
Going Strong!

For inquiries:

Border Explorers
Snowmobile Club
Box 574
Flin Flon, Manitoba
R8A 1N4
Phone 306-688-6087
(John / Shelly)
306-688 -7159
(Dwayne)

*Check out our web site
for new and upcoming
events*

www.border_explorers.com



SaskMan Border Bash
Border Explorers
20th Anniversary

Saskatchewan Provincial
Rally
Northern Manitoba Rally

March 4 & 5 2011

**Five Hundred Dollars for the Club
who registers the most members,
for the Rally!**

Friday March 4

- . Registration
- . Entertainment

**Fresh Northern Pickerel Fish Fry
(Well known for our area!)**

Saturday March 5

- . Late registration
- . Breakfast
- . Registered Rides & Lunch
- . Ice Fishing
- . Frozen Aces Poker Derby
\$ 5150.00 in Prizes
- . Supper
Catered by Victoria Inn
- . Social

Shuttle Service Available

Total Weekend Package \$60.00

Supper & Social \$30.00

14 years & under weekend pkg. \$35.00

Social \$15.00

Frozen Aces Poker Derby registration
\$10.00 per hand or 3 for \$20.00

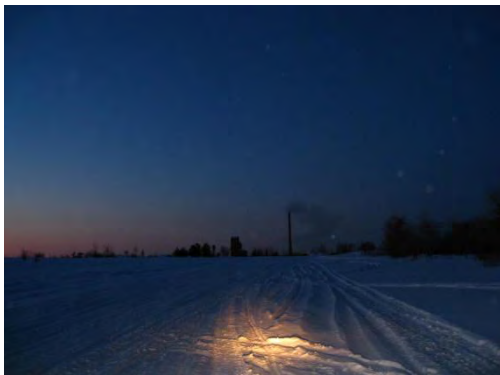
**More Activities Will Be Added, As Preparations
Unfold**

Creighton Sk./ Flin Flon Mb.

Border Town/ Border Rallies

While attending the Saskatchewan & Northern Rally weekend you can enjoy snowmobiling in both Saskatchewan and Manitoba Provinces. The designated trail system offers approx. 228 kms of groomed trails and lakes, maintaining over 22 lakes and countless portages, allowing you to take advantage of the long lake runs, heavily forested and rocky terrain. Our trails are well marked, signed and mapped for your convenience. The club offers two warm up shelters on our most popular trails. Stop in and warm up by the fire. We also encourage you to stop and have refreshments at one of the hospitable establishments. Whether you choose to ride in one of the guided tours or explore on your own, we are certain you will want to come back time & time again.

Come Play In Our Winter Wonderland!



Accommodations

The Prospector Inn

306-688- 2957

Victoria Inn

204-687-7555

Bakers Narrows Lodge

204-681- 3250

Oreland Motel

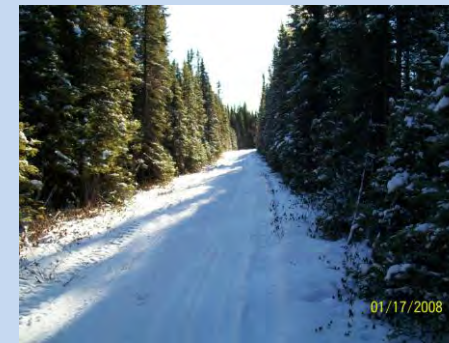
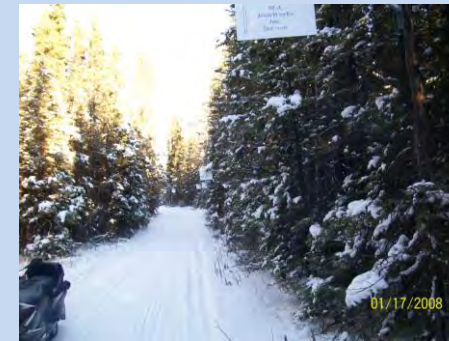
204-687-3467

Bay Side Inn

306- 362- 2122

Some Extra attractions

- . Tour the Whitney Forum/
Home of the Flin Flon
Bombers
- . Flin Flon Aqua Center/
indoor pool with sauna and
weight room
- . Flin Flon Public Library
- . Flin Flon Ski Club/ 27 km of
Trails
- . Curt's Custom Clubs/ Virtual
golf simulator.
- . Plenty of shopping on Main
Street
- . Recreational dealers for parts
& accessories
- . Box stores including
Canadian Tire, WalMart,
Extra Foods



OUR WELL GROOMED trails
Come from the combined efforts of our
hard working volunteers, equipment ,
Snopass purchasers & our Corporate
Advertising supporters.....



Corporate Advertising

Supporters for 2009- 2010 Avalanche

Victoria Inn

Frontline Sport & Leisure

M.A. Iron Works

Gateway Inn

Alpine Convenience

Bakers Narrows Lodge

Denare Beach Mechanical

McKeen Trucking

Ideal Signs & Design

Blizzard

Flin Flon Insurance

Investors Group

Standard Insurance

Reliance